



The Luxmanor

# Greensheet

Serving Luxmanor, Windermere, and The Oaks

North Bethesda, Maryland

Nov. 2010-Jan. 2011

[www.luxmanor.org](http://www.luxmanor.org)

## Traffic Committee Update

At the October General Meeting, the community authorized the LCA Traffic Committee to interview candidates and solicit proposals for a comprehensive community traffic study. This would involve hiring an independent traffic engineering firm to develop analyses/recommendations of measures that could ease traffic concerns in our community. The membership also authorized the Traffic Committee to contact Montgomery County officials (Department of Transportation, Police, etc.) to solicit their cooperation in these efforts at community problem-solving.

On December 9th, the Traffic Committee met with representatives from the Department of Transportation, the office of Councilmember Roger Berliner and the Director of the Bethesda-Chevy Chase Regional Services Center to address our concerns, ask questions about the status of certain items, and solicit their input on the most productive way to proceed.

Among the items discussed were the installation of adopt-a-road signs on Tilden Lane (who authorized these and why?), the status of the 1992 Master Plan's call for improvements on Tuckerman Lane (still being researched, but, based upon information received to-date, this was apparently part of a Capital Budget Plan last year that was removed—but the need has already been demonstrated and proven), clarification of the process needed to install speed limit signs on Lux Lane, etc.

Based upon information received at this meeting and subsequent follow-up exchanges, the Traffic Committee is adjusting the timeline presented at the October General Meeting and posted on the listserv. While it ultimately may be necessary for the community to engage an independent consultant, it appears that there are opportunities before then to receive expert advice at no cost from County and other officials. The Traffic Committee feels that it is fiscally and practically prudent to exercise all available public resources before spending community funds. Therefore, we anticipate delaying the interview process until the end of January to allow time to explore these options. We will keep the community posted as things progress.

**LCA members can enjoy half-price admission to the Rich Bloch Magic Show at Woolly Mammoth Theater—\$10 tickets must be purchased in advance! See [luxmanor.org](http://luxmanor.org) for details on this fun family event!**

## President's Letter

You may have noticed that you didn't receive November and December Greensheets – don't worry, it wasn't personal! We decided to combine these publications to allow time to report on the October General Meeting and to give a holiday break for our hardworking volunteers!

We are thrilled to report that this issue is the first Greensheet to be delivered electronically to those who requested it – saving postage and trees! If you would like your Greensheet delivered via email, please drop an email to me at dellast@verizon.net and we will be happy to make the change. Please allow a month to update our labels.

The LCA would like to welcome our new Special Events Chair, Sue Wilson of Tall Tree Terrace, who is taking over from Judy Abramson. Judy worked very hard to coordinate all the wonderful events over the past 18 months and we appreciate her efforts and dedication in helping the Board find such a capable replacement! Sue is a relatively “new” neighbor and I hope you will all join me in thanking her for her dedication to the community and offer her your support as she works to coordinate all the upcoming activities – including our February Cookie Exchange!

The LCA Directory is being finalized as this issue goes to print – paid members should expect delivery sometime in mid-late January (barring another “Snowmageddon”)! As noted in our October edition, listserv membership will soon be available only to paid LCA members or residents of neighboring communities (Old Farm, etc.) who pay a nominal fee. As the popularity of our listserv and events has grown, the time demands involved in administration and coordination have also increased dramatically. In fairness to our hard-working volunteers and to dues-paying members who support these and other LCA activities, certain benefits will only be available to paid members.

As we brave the cold and prepare for winter, please take a moment to think about preparedness for a snow emergency. Check your own emergency plan and supplies and think about neighbors who might need assistance. Also, in the event of a major snow, PLEASE mark or clear any nearby fire hydrants – whether you simply stick a broom in the snow to mark the spot or clear it out – the home you save might be your own!

Della Stolsworth

## Luxmanor Citizens Association

The Association serves Luxmanor, Windermere, and The Oaks.

### Officers

<b>President</b>	Della Stolsworth	984-4475
<b>Vice Pres.</b>	Harris Leonard	897-8588
<b>Rec. Sec.</b>	Sander Davidson	493-4810
<b>Corr. Sec.</b>	Barbara Gold	571-0173
<b>Treas.</b>	Judy Morenoff	881-3132

### Trustees

Paula Bienenfeld	984-2944
Lynn Waters	530-3620
John Beamer	881-7174

### Committee Chairs

<b>Directory</b>	Robert Wilkinson	881-4321
<b>Environment</b>	Nathalie Silver	881-0861
<b>Greensheet</b>	April Chang	881-3021
<b>Membership</b>	Marilyn Hammerman	881-0011
<b>Planning/Dev.</b>	Paula Bienenfeld	984-2944
<b>Public Safety</b>	John Beamer	881-7174
<b>Roads/Traffic</b>	Bill King	881-2199
<b>Schools</b>	Ellen Paul	897-0022
<b>Signs</b>	Hilary Lavine	530-7616
<b>Special Events</b>	Sue Wilson	881-6682
<b>Website/Yahoo</b>	Todd Berman	468-6707
<b>Welcome</b>	Beverly Piccone	530-7449

### Highlights of LCA General Meeting minutes of October, 2010 and October and November LCA Board Meetings

- Traffic Committee authorized to pursue hiring independent traffic study.
- \$500 given to WJ After-Prom Breakfast
- Proxy voting for General/Special Meetings was approved. Requires contacting Membership Chair AND Recording Secretary at least 7 days prior to scheduled meeting to record proxy—via mail or fax.
- Electronic attendance (conference call/webcast, etc) at LCA meetings by Board members was unanimously approved.
- Sue Wilson appointed as Special Events Chair—thanks to Judy Abramson!

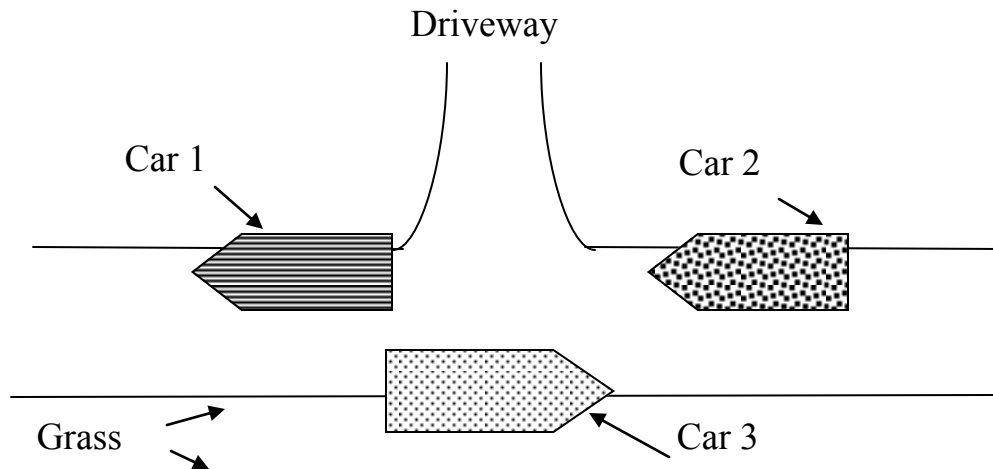
# Emily Post's Discussion of Luxmanor Parking

Contributed by April Chang

(I am making reference to Emily Post because Miss Manners would probably think this issue is too minor to discuss. Emily didn't think anything was too minor, God bless her.)

Luxmanor's lovely atmosphere is created, in part, by our narrow, inviting, country-style streets. While some streets are larger and more formal, many small lanes curve through our shaded neighborhoods presenting an inviting view unhindered by nasty, sterile sidewalks and those aggressively hard curbs. Indeed, most byways meander between our gardens without those delimiting features which hamper the joy of personal creativity in walking — and in parking. Ah, creativity. Unfortunately, one man's creativity is another woman's ISSUE.

During the day, I have seen no significant problems anywhere except at Luxmanor and Tilden (because of the school). We have few daytime issues because most of us work and do not invite other people over until after dark and that is when THE ISSUE begins. I have presented a simple diagram of THE ISSUE, in its worst case, below.



Don't panic. I am not in favor of getting curbs and sidewalks and I will not be discussing leaf piles. I am just talking about event/party parking.

Using the diagram above, please note:

- 1) No one can get down the street who is not on a bicycle, skateboard, or horse. (If a horse *is* used, this is called a steeplechase.) While Car 3, which was doubtless the last to arrive, checked to see that folks had room to get though ahead of him (thank you), there was no such check in the back (nuts).
- 2) If the person who lives up the driveway has as much trouble backing up as I do, and as little depth-perception, it is suggested that all three cars obtain additional collision insurance and arrange for alternate transportation home.
- 3) All three cars, in an effort to be courteous to other drivers (thank you), have two wheels in someone's yard (nuts). I recommend that anyone who intends to park in this manner bring along a pick and shovel, a few buckets of top soil, and/or 10-12 linear feet of turf. The width of the turf will depend upon *how* courteous the driver intends to be to *other drivers*. If they are *very* courteous, they will put their tires *way* into someone's lawn and wider replacement turf will be necessary. Homeowners are currently having to reseed their lawns themselves and some are considering seeding with nails and broken glass.

Parties and events are good for humankind. We should have lots of them. However, all of us who live on the narrower streets would be very grateful if cars could be parked all on one side of the street, well away from driveways, and some reasonable distance from one another so that one car can pull over to let another pass (thank you). Better yet, ask folks to park on a wider street or at a school if one is nearby (thank you).



THE LCA WISHES EVERY FAMILY

IN OUR COMMUNITIES

THE HAPPIEST, HEALTHIEST, AND MOST

PROSPEROUS

NEW YEAR



As you make your New Year's resolutions, we encourage you to consider becoming part of the community - whether it be serving on a committee, attending meetings and reporting back to the community, serving on the Board, organizing or assisting with an event or activity or just offering to put out/take in meetings signs - we need you!



#### A Note on the Luxmanor Listserv

The Luxmanor listserv is a busy place, generating many posts every day. Almost 350 individual members have posted at least once in the last six months. It is our aim to keep our listserv mail as free as possible from SPAM of all kinds, from Internet crime schemes and pornography to the most local kind of SPAM, which would be similar to the annoying unsolicited "junk mail" advertising that arrives in our snail-mail boxes. We have strict rules about what may be posted, and how often; and guidelines regarding courtesy and appropriate content (religious and political views, for instance, are not allowed.) Our moderators work very hard to keep our listserv email useful, friendly and safe by approving each piece of email before posting it. In the last four months our moderators have prevented three virus attacks that could have infected members' hard drives had those emails not been moderated.

Sometimes there is mail that falls into a "gray area" -- not exactly what is approved, but not exactly forbidden, and which may open a Pandora's Box of similar email, with the argument that, "such and such was posted by so and so, why can't I?" Those cases are difficult to handle, and can lead to protracted discussion between members and listserv management. In order to clarify some of the guidelines that have been problematic, we have been carefully updating them with more structured language. This has been a tough assignment, and several heads have been engaged over months in creating as clear and reasonable a set of rules as possible. These revised Guidelines have now been posted on the Luxmanor.org website.

## Neighbors' News

### In Memoriam

With sorrow, we announce the passing this summer of Robert Ertman of 6513 Windermere Circle. He enjoyed living in Luxmanor and had lived here since 1972. He is survived by his widow, Lilo, two children and two grandchildren.

### We welcome the following new neighbors:

David and Kimberly Klimek and their children, Emma and Ben (3) and Chase (2), have moved to the 6100 block of Rosemont Circle. Their home phone is 301-530-8051 and their email address is berly7@hotmail.com.

Arun and Shakuntala Chockalingam have moved to 11100 Huntover Drive from Vancouver, Canada. Hobbies include quilting and going for walks and they chose this neighborhood for its proximity to all of their needs. Their phone is 301-468-0608 and their email is arunshakuntala@hotmail.com.

Miguel and Isabel Empis have moved to the 11000 block of Luxmanor Road. Originally from Portugal, they have lived in the United States for seven years. Their children are Luisa (19) who attends Montgomery College and Marina (17) who studies at the French International School. Their phone number is 301-915-0288 and their email is isabel\_empis@yahoo.com. Bem vindo!

### **Errata:**

The Editor seriously messed up the New Neighbors information in the last edition.

Andrea Usiak and Douglas Stern of Danville Drive are actually the Stearns, with an "a". Nicole and Mitchell Nydish's six year old daughter is Halley (not Hailey). Lastly, I misspelled the last name of Deborah and Burman Berger (this is correct) of Rosemont Circle. **Editor's Note: My apologies to all three families.**

### Late Summer News

Mary Blasberg of Windermere Circle is proud of her 4 and 1/2 year old granddaughter, Shona Wilson, who competed and became the youngest member of the Montgomery County Aquatic Team. Her parents, Heather Blasberg and Dave Wilson live in Potomac.

### Letters to the editor:

*(We received the following gracious letter from Marty Mangold after an article in the last edition credited him with the invention of the List Serve. We all continue to miss Paul Silver.)*

Dear Editor,

Congratulations on a very fine Greensheet, and a nice discussion of the ListServe.

While I'm proud to be part of the history of this great communication tool, having been its moderator and President of LCA for two years, it was created by my predecessor in both offices, Paul Silver. Paul sent the first test message on May 26, 2000, in subtle honor to Jane's and my wedding anniversary. The term "ListServe" is actually a kind of historical anachronism, and refers to the IBM technology that preceded Yahoo Groups. I hope we keep calling it the ListServe for a long time. 13 thousand messages after Paul's first test, it has been a great carrier of conversations and a pretty good topic of conversation itself. I applaud the new policy and especially the skillful moderation by the third moderator -- moderator for life, I hope -- Todd Berman.

Best regards,  
Marty Mangold



The Luxmanor Greensheet  
Luxmanor Citizens Association  
Serving Luxmanor, Windermere and The Oaks  
11400 Hollow Tree Lane  
Rockville, Md 20852

PRSR-T-Std  
U.S. POSTAGE PAID  
SUB. MD  
PERMIT NO. 5878