



The Luxmanor

Greensheet

Serving Luxmanor, Windermere, and The Oaks

North Bethesda, Maryland

February, 2011

www.luxmanor.org

Oh, What A Night! Special Membership Meeting January 25th

The Luxmanor Citizens Association (LCA) Board held a special meeting of the LCA membership to discuss the recent special exception application for the property at 11406 Old Georgetown Road (Sedgwick Lane at the corner of Old Georgetown Road).

The special exception and related variances raised serious concerns for the entire Luxmanor community including:

- In addition to changing the character of our neighborhood from residential to commercial, this will support efforts to permit further commercialization and non-residential uses along remaining Old Georgetown lots and other community streets.
- The submitted application is for a 3-story dental/medical clinic with periodic conferences—hardly in character with the community.
- The sole entrance/exit is proposed to be on Sedgwick Lane—a narrow residential street with no sidewalks which barely accommodates two-way traffic.
- In order to create the requested entrance/exit on Sedgwick, the Applicant is required to widen Sedgwick Lane by cutting down some of the historic 70-year old cherry trees—some of the oldest in the County and a community treasure.
- The proposal calls for only 21 parking spaces (the maximum that can fit on the lot) to serve 19 employees and the patients of four dental/medical professionals. This will inevitably result in cars being parked along Sedgwick Lane, Luxmanor Road, etc. Additionally, they request the lot be closer to adjoining lots than allowed by current rules.
- There is a no-turn restriction from northbound Old Georgetown Road onto Sedgwick. Clinic visitors and employees approaching from that direction will be forced to make a U-turn at Tilden/Old Georgetown (an intersection already hazardous for pedestrians and vehicles) OR cut through neighborhood streets.

An unprecedented turnout of 150 neighbors attended the Special Meeting to learn more and to ask questions. Ultimately, there was a unanimous vote by the membership that the LCA support the efforts of concerned neighbors by providing matching funds to their efforts on a 3:2 basis, with LCA spending a maximum of \$12,000, for legal fees to oppose this intrusion. The LCA is also writing and testifying in opposition to this application/variances. Neighbors are encouraged to support this effort by writing, signing a petition and attending the Planning Board hearing in April—more news to come!

President's Letter

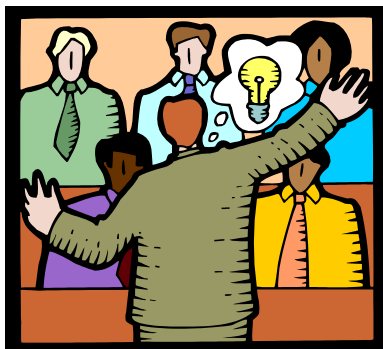
In lieu of the standard President's Letter, I would like to use this space this month to express my gratitude for the tremendous show of civic involvement that this community demonstrated at our Special Membership Meeting On January 25th.

Despite the fact that this event conflicted with the President's State of the Union Address, (and was held on a blustery winter evening,) approximately 150 LCA members braved the elements to express their concern for maintaining the character of this wonderful community and to exercise their right to vote on significant community actions.

Not only did the meeting vastly exceed attendance expectations, many attendees were first-time or long-absent members. If you were not there, you should be aware that the meeting, while covering **A LOT** of material, was both efficient AND orderly. Despite last-minute scrambles for seating (apologies to those of you who wound up sitting on top of tables!) and lines to register to vote, we still managed to address all questions raised on the listserv, present pertinent facts, conduct a Q & A from the audience and hold a vote - all in less than one hour!

I hope that this experience encourages you to participate in future LCA events—whether it be our Social Events (see the Cookie Exchange and Art Show announcements in this issue) or our May General Meeting. If you haven't attended an LCA event or if it has been a while, please come and enjoy the neighborhood fun!

Della Stolsworth
LCA President



Luxmanor Citizens Association

The Association serves Luxmanor, Windermere, and The Oaks.

Officers

President	Della Stolsworth	984-4475
Vice Pres.	Harris Leonard	897-8588
Rec. Sec.	Joan Suwalsky	897-0908
Corr. Sec.	Barbara Gold	571-0173
Treasurer	Judy Morenoff	881-3132

Trustees

Paula Bienenfeld	984-2944
Lynn Waters	530-3620
Ellen Paul	897-0022

Committee Chairs

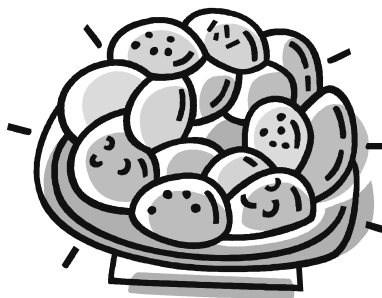
Directory	Robert Wilkinson	881-4321
Environment	Nathalie Silver	881-0861
Greensheet	April Chang	881-3021
Membership	Marilyn Hammerman	881-0011
Nbrhd. Reps	Peggy Souza	230-1987
Planning/Dev.	Paula Bienenfeld	984-2944
Public Safety	John Beamer	881-7174
Roads/Traffic	Renee Howell	816-9210
Schools	Ellen Paul	897-0022
Special Events	Sue Wilson	881-6682
Website/Yahoo	Todd Berman	468-6707

LCA Board Minutes: Highlights of Meetings of 1/4/11 and 1/20/11

- The Board approved disbursement of budgeted 2010-2011 School Grants to Luxmanor Elem and Tilden Middle of \$500 each for outdoor landscaping improvements. The Board also approved a School Grant of \$500 to the WJ Education Foundation.
- The Board voted to hold a Special Membership Meeting to recommend that the LCA match individual funds received to support opposition to the Sedgwick Lane Special Exception. See page 3 for details.
- The Board approved design changes to the Directory, which will be mailed to paid

SWEET DEAL COMING UP!

IT'S THE 2ND ANNUAL LCA COOKIE SWAP!



WONDERING WHAT TO DO ON A COLD,
WINTRY SUNDAY AFTERNOON? OUR SWEET SOLUTION!

JOIN US

SUNDAY, MARCH 6TH

2:00 PM

Bake your favorite cookie, and bring at least three dozen of them (along with copies of the recipe) over to Judy and Stan Abramson's at 6504 Tall Tree Terrace. Be adventurous...we'll be happy to sample new creations, or rely on an old standard. All kinds are welcome. The LCA will supply baggies for samples to share, plus tea, coffee, and lots of good conversation with your neighbors.

This is an equal opportunity Cookie Swap---male and female bakers welcome!!!

RSVP Required to LCA Special Events Chair, Sue Wilson at suewilsonsales@msn.com
or 301-881-6682

LCA Traffic Committee—Updates and News

Based upon Traffic Committee Report from Committee Chair Renee Howell

In December the LCA Traffic Committee met with Ken Hartman, Director Bethesda-Chevy Chase Regional Service Center, representatives of MoCo DOT and Rodger Berliner's office to discuss traffic concerns gathered by the neighborhood survey and two traffic meetings. It also voiced our concern that there was a lack of coordination between the different divisions of government regarding installation of traffic measures - no one was really looking at the overall neighborhood. The Committee gave examples of how installed measures could have/have had unintended consequences and explained that this has led the community to consider hiring an independent traffic consultant before we move forward with any significant requests. Sadly, the DOT and other reps confirmed that there is no resource responsible for an overall planning function that would be able to assess the broader impacts individual traffic measures may cause. They did understand and sympathize with our dilemma. They gave the Committee a name of a Parks and Planning staff member who might be able to help us start. They cautioned that if we did hire a consultant we must provide that person/firm with very specific instructions on scope. They emphasized that we should stress our community has identified issues and is seeking solutions, rather than wasting time and money having the consultant re-evaluate the issues. All the reps, said they would support working with an independent consultant if one is engaged.

Progress was made on several specific points:

- We discussed sidewalks and other measures on Tuckerman. The master study on Tuckerman is to be initiated in FY13 and can be viewed at http://www.montgomerycountymd.gov/content/omb/FY11/appr/cip_pdf/509337.pdf.
- We discussed the possibility of sidewalks and additional lighting on Marcliff and have made a request in the system for additional lights from PEPCO at the intersection of Marcliff and Rosemont.
- We plan to move forward on requesting stop signs on Wayside Dr and Lux Lane in Windermere. Ken Hartman has provided information on how and where to request stop signs and speed cameras.
- He also promised to help us find out how the forlorn "Adopt -a-Road" signs got installed on Tilden Lane.

As a next step, the Traffic Committee will meet with Parks and Planning and then report on what options are available from them, so the community can decide if an independent traffic consultant is needed.

On Jan 6, Ellen Paul attended the Montgomery Co Pedestrian and Traffic Safety Advisory Committee at the County Executive's Office. County and State transportation officials heard the Safety Committee's comments from a recent letter to Ike Leggett. Ellen and Della Stolsworth had previously raised some of our community's issues at a Western Montgomery County Citizens Advisory Board Meeting in October.

Topics discussed on January 6th included:

1. The metrics used to evaluate problem pedestrian safety areas may not reflect the reality of risks. They specifically mentioned Tuckerman Lane, which may not be a high incidence area because there are no sidewalks and residents are fearful of walking or crossing.
2. The need for better coordination between the Montgomery County Department of Transportation, the State Highway Administration, and the Maryland National Park and Planning Commission, as well as other agencies in responding to pedestrian safety concerns.

(continued on page 6)



Calling all Luxmanor artists!



Start planning for the 3rd Annual LCA Spring Art Show!



Art in the Cabin



April 30th and May 1st



This is your opportunity to showcase your work and be part of the thriving artist community of Luxmanor. We are planning to have the show through the weekend with an LCA members' Artists' reception on Sunday afternoon.



If you would like to participate or know artists within our community who would like to be part of the show, we would love to hear from you.



Contact: Varda Avnisan



varda.avnisan@gmail.com



home: 301-816-7955 cell 240-498-3099



Neighbors' News

New Neighbors

We welcome new neighbors Suaad Shuker and Mustafa Saleem to Luxmanor. They have moved here from Potomac and now reside in the 6200 block of Charwood Drive. They have four children, Ahmed, Akram, Laith, and Anfes. They can be reached at phr_aneesaleem@yahoo.com or 301-530-2802

In Memoriam

The LCA community mourns the passing of our neighbor, Al (Alfred) Moritz. Al was been part of the neighborhood for over 40 years. A retired architect, Al was a wonderful painter and an avid biker. His watercolors were a highlight of our LCA Arts in the Cabin Art Show and his talent was matched only by his enthusiasm and support of other artists and the community as a whole. He is the author and illustrator of **Survival 1933-1944**, which chronicles his escape from the Nazis. He spoke several languages and translated many documents for the Holocaust Memorial Museum.

Our hearts go out to his wife, Yvonne, and his family.

Errata in our Errata

Two issues ago, we welcomed our new neighbors, the Nydishes, including their daughter Hailey. Then, we apologized that we had misspelled her name. We hadn't, so we are sorry about that too. They are all still very welcome.

Traffic Committee Report (continued from pg4)

3. A significant disconnect exists between recent pedestrian-friendly sector plans and adjacent residential communities. The Pedestrian Safety Committee discussion mentioned the recently approved White Flint Sector Plan which emphasized improving pedestrian connectivity within the Sector Plan area: however intersections and roads connecting neighborhoods to this area are not pedestrian-friendly.
4. Communities are concerned about the appearance of bias towards creating vehicular efficiencies without parallel concern for pedestrian efficiencies.
5. The processes for resolving pedestrian safety issues should be goal-oriented and not focused entirely on narrowly prescribed professional guidelines.

The LCA Traffic Committee will to continue a dialogue with County Staff and the other citizens' boards/committees on how best to meet the above issues raised by the Luxmanor community and will keep you informed.

SNOW ANGELS, 2011

Contributed By Lynn Waters

Two-day-old Samuel Brant arrived home from Suburban Hospital with his first-time parents, Maria Blok and Dmitry Brant, on January 26, just as the infamous "rush hour snow dump" was beginning.

For a few hours, their house was filled with peace and love and the wonder of new life; but suddenly, a flickering of their electric lights warned the new parents of the potential danger to their infant from the storm raging outside. Dmitry reacted quickly by racing out on foot, (the roads were already impassable for cars). He ran up Whisperwood to the corner, and then down the length of Buckwood Lane, to knock at Bridget and Chip Buel's door. Dmitry didn't know the Buels, but he knew they had a powerful generator ready for any electrical emergency, and that they had famously embraced the neighborhood with hot food and good company during 2010's Snowmageddon. If the power went out, he asked, would they shelter his little family?

Reassured that of course they'd be more than welcome, Dmitry slogged back home through the rapidly accumulating snow to Maria and wee Samuel. But not for long! Within minutes, there was a thundering crash, and their house shuddered in the shock wave as a towering tree fell down and through their next door neighbor's roof, that terrifying sound followed by a series of ominous booms and great flashes of green and blue lights bursting against the wall of falling snow as transformers blew in every direction. And then utter darkness enveloped them, the only sounds the cracking of massive tree branches giving way under the weight of the heavy snowfall.

With the fierce bravery of protective parents, Maria and Dmitry clutched their precious bundle of new life, and battled their way through the darkness and falling branches and relentless snow in a scene reminiscent of a novel set in their native Russia, and into the embracing cheer of the Buel's warm and bright home, where for the rest of the storm and its frigid aftermath (Whisperwood's power was not restored until the following Saturday night) the Buel's generator and welcoming spirit kept Samuel safe and warm, and provided light for his grateful parents to admire him by!



Congratulations to Maria and Dmitry, and our proud thanks to the Buels for being emblematic of Luxmanor's neighborly spirit.

Due to a computer crash, our file of neighbors who requested receipt of the Greensheet electronically has been corrupted! If you would like to help the environment by receiving your Greensheet via email, **please email LCA President Della Stolsworth at : dellast1@verizon.net**.





The Luxmanor Greensheet
Luxmanor Citizens Association
Serving Luxmanor, Windermere and The Oaks
11400 Hollow Tree Lane
Rockville, Md 20852

PRSRT-Std
U.S. POSTAGE PAID
SUB. MD
PERMIT NO. 5878

